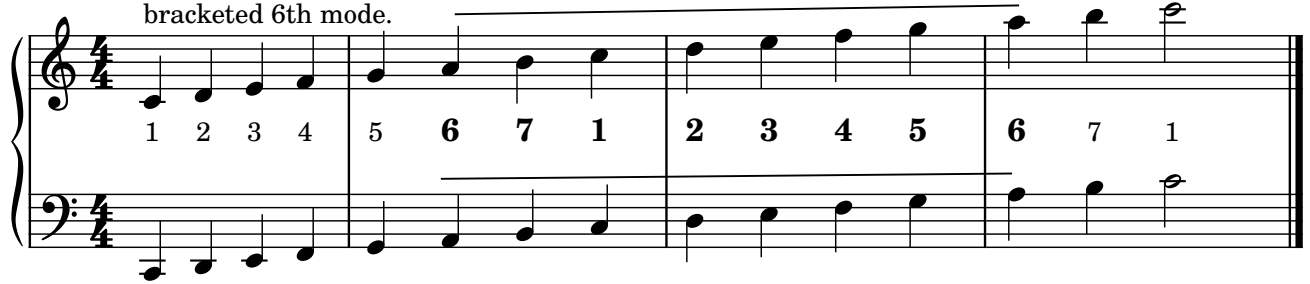


Minor Scales 2b: Natural Minor

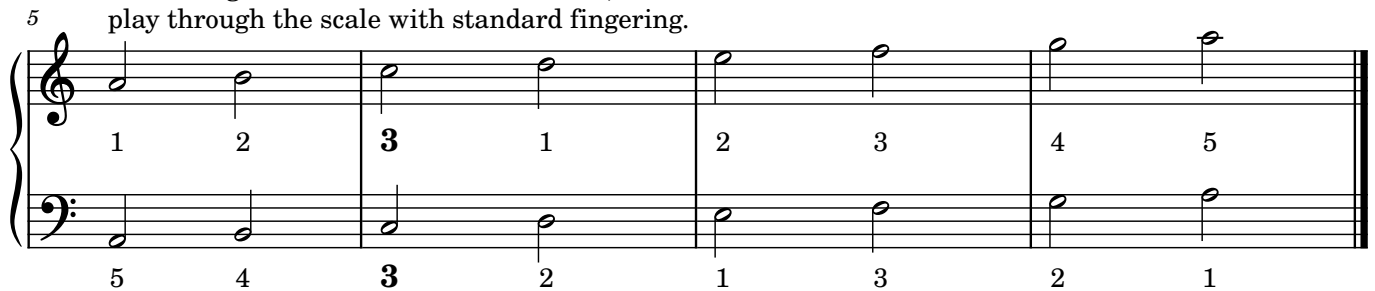
(The "relative" minor scale. Aeolian mode.)

JimO

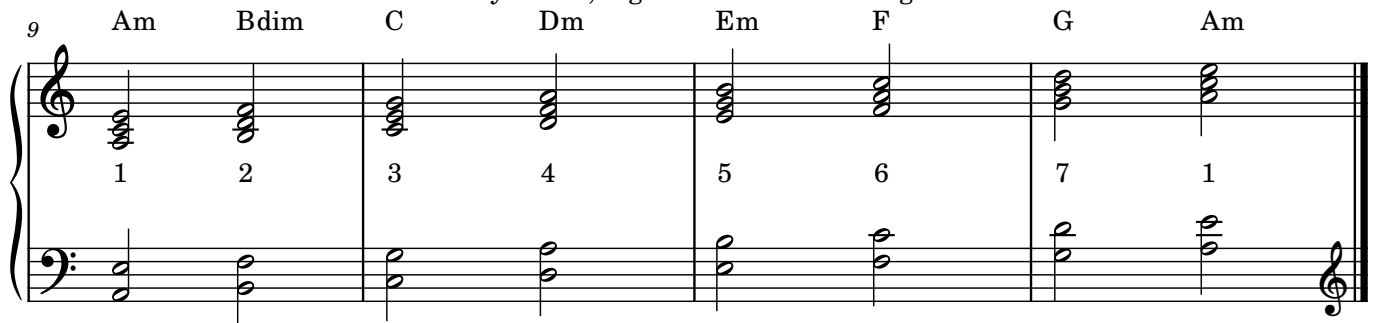
1. C major scale with bracketed 6th mode.



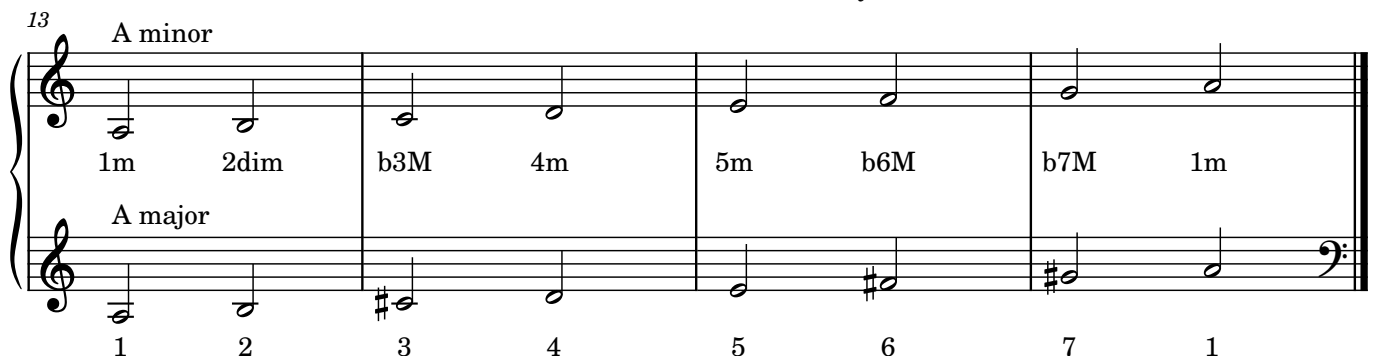
2. Starting with the 6th tone of the scale, play through the scale with standard fingering.



3. This is the "Relative" minor of the major key. We call it that because it shares it's scale tones with the major key located at Step 3 above. Other names for it are "Natural" minor or Aeolian mode. If we think of this scale as a key center, it generates the following triad chords.



4. The Aeolian mode scale is sometimes described as the "**Parallel**" **minor** of a major chord built from the same root. In this model the tones are called by the names below.



5. Natural Minor Mode Exercise for all 12 keys. Key Signatures of Relative Majors included.

17 1. A minor

1 2 3 1 2 3 4 5 4 3 2 1 3 2 1

Detailed description: This block contains the first exercise for A minor, spanning measures 17 to 20. The right hand (treble clef) plays a sequence of eighth notes: A4, B4, C5, D5, E5, D5, C5, B4, A4. The left hand (bass clef) plays a sequence of eighth notes: A3, G3, F3, E3, D3, C3, B2, A2. The key signature has one flat (Bb). The exercise ends with a double bar line.

(Continue with "standard" fingering unless indicated)

21 2. D minor

Detailed description: This block contains the second exercise for D minor, spanning measures 21 to 24. The right hand (treble clef) plays a sequence of eighth notes: D4, E4, F4, G4, A4, G4, F4, E4, D4. The left hand (bass clef) plays a sequence of eighth notes: D3, C3, B2, A2, G2, F2, E2, D2. The key signature has two flats (Bb, Fb). The exercise ends with a double bar line.

25 3. E minor

Detailed description: This block contains the third exercise for E minor, spanning measures 25 to 28. The right hand (treble clef) plays a sequence of eighth notes: E4, F4, G4, A4, B4, A4, G4, F4, E4. The left hand (bass clef) plays a sequence of eighth notes: E3, D3, C3, B2, A2, G2, F2, E2. The key signature has three flats (Bb, Fb, Cb). The exercise ends with a double bar line.

29 4. G minor

Detailed description: This block contains the fourth exercise for G minor, spanning measures 29 to 32. The right hand (treble clef) plays a sequence of eighth notes: G4, A4, B4, C5, D5, C5, B4, A4, G4. The left hand (bass clef) plays a sequence of eighth notes: G3, F3, E3, D3, C3, B2, A2, G2. The key signature has four flats (Bb, Fb, Cb, Ab). The exercise ends with a double bar line.

33 5. B minor

Detailed description: This block contains the fifth exercise for B minor, spanning measures 33 to 36. The right hand (treble clef) plays a sequence of eighth notes: B4, C5, D5, E5, F5, E5, D5, C5, B4. The left hand (bass clef) plays a sequence of eighth notes: B3, A3, G3, F3, E3, D3, C3, B2. The key signature has five flats (Bb, Fb, Cb, Ab, Eb). The exercise ends with a double bar line.

37 6. C minor

Detailed description: This block contains the sixth exercise for C minor, spanning measures 37 to 40. The right hand (treble clef) plays a sequence of eighth notes: C5, D5, E5, F5, G5, F5, E5, D5, C5. The left hand (bass clef) plays a sequence of eighth notes: C4, B3, A3, G3, F3, E3, D3, C3. The key signature has six flats (Bb, Fb, Cb, Ab, Eb, Db). The exercise ends with a double bar line.

41 7. F# minor

45 8. F minor

49 9. C# minor

53 10. Bb minor (Enharmonic A#)

57 11. G# minor (Enharmonic Ab)

61 12. Eb minor (Enharmonic D#)